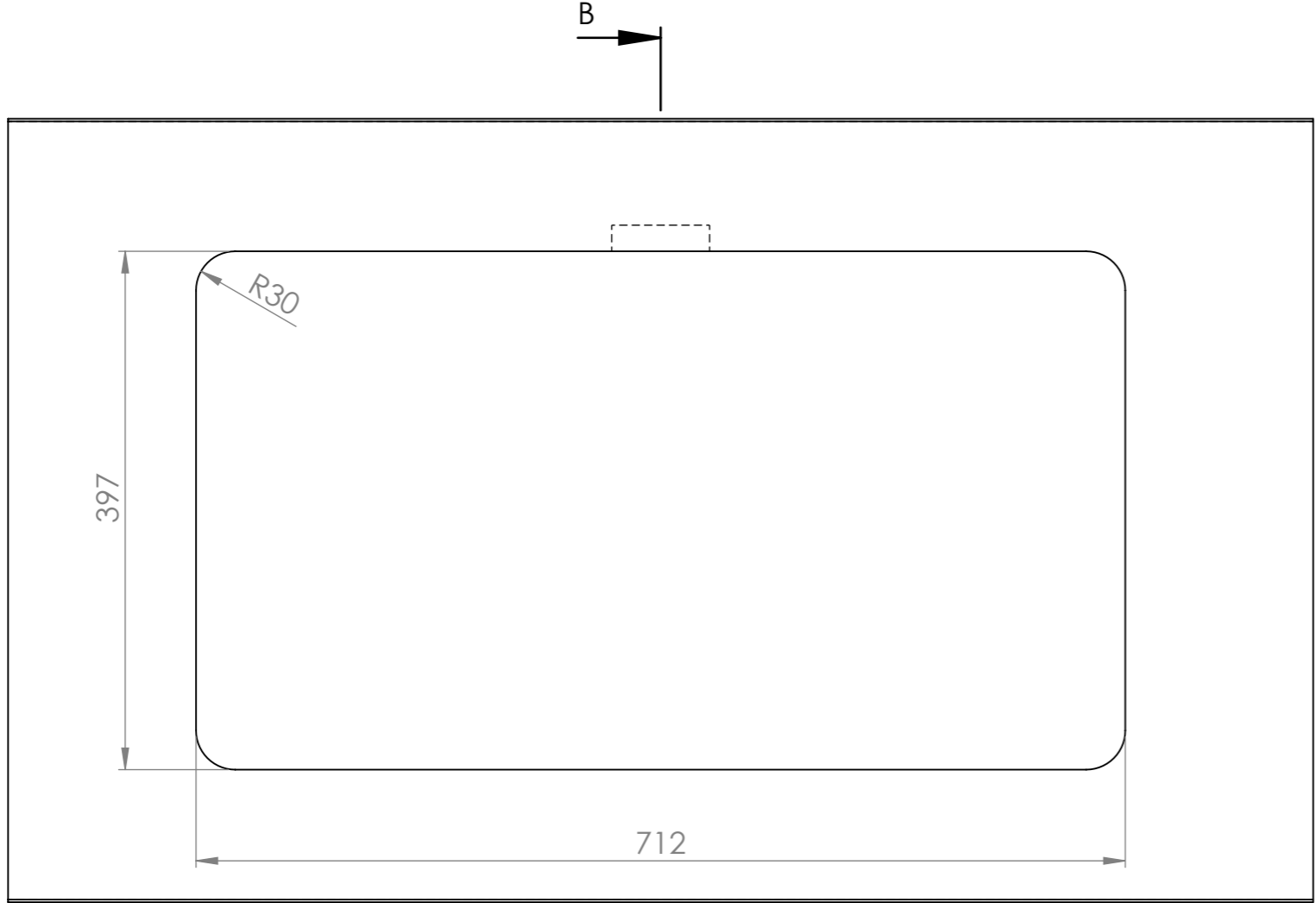
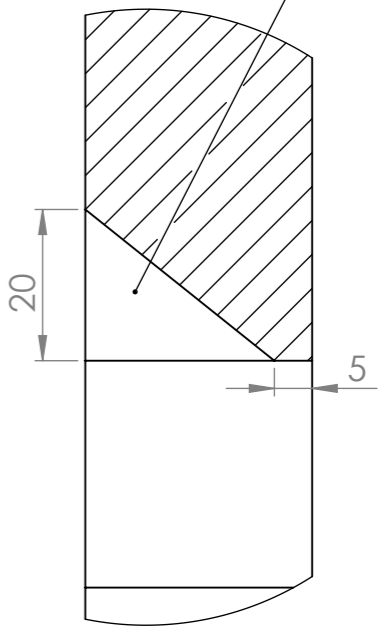


Change description	Date	Designed by
--------------------	------	-------------

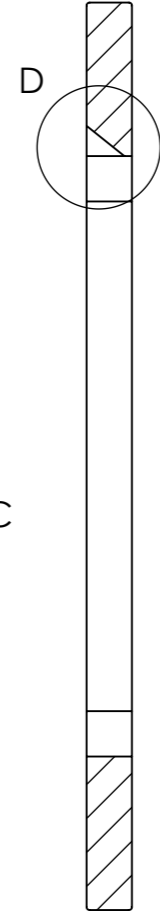
CUT-OUT



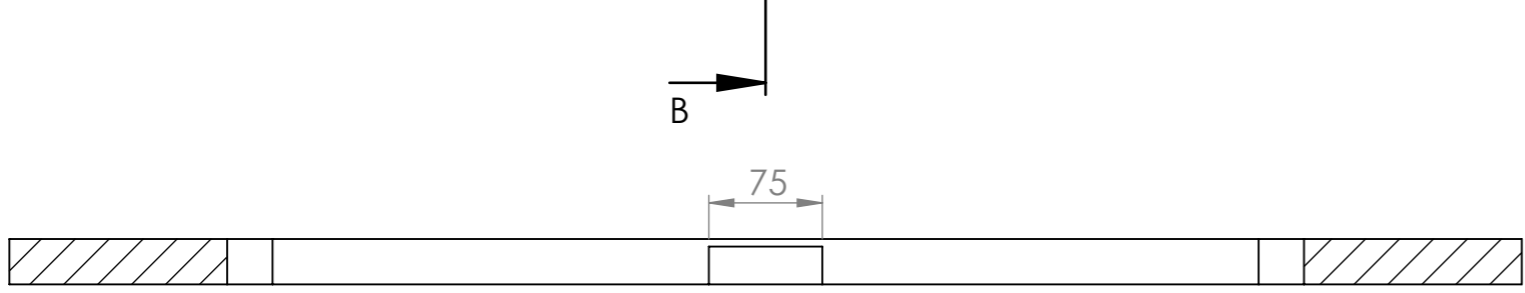
CUT-OUT FOR OVERFLOW



DETAIL D
SCALE 1 : 1



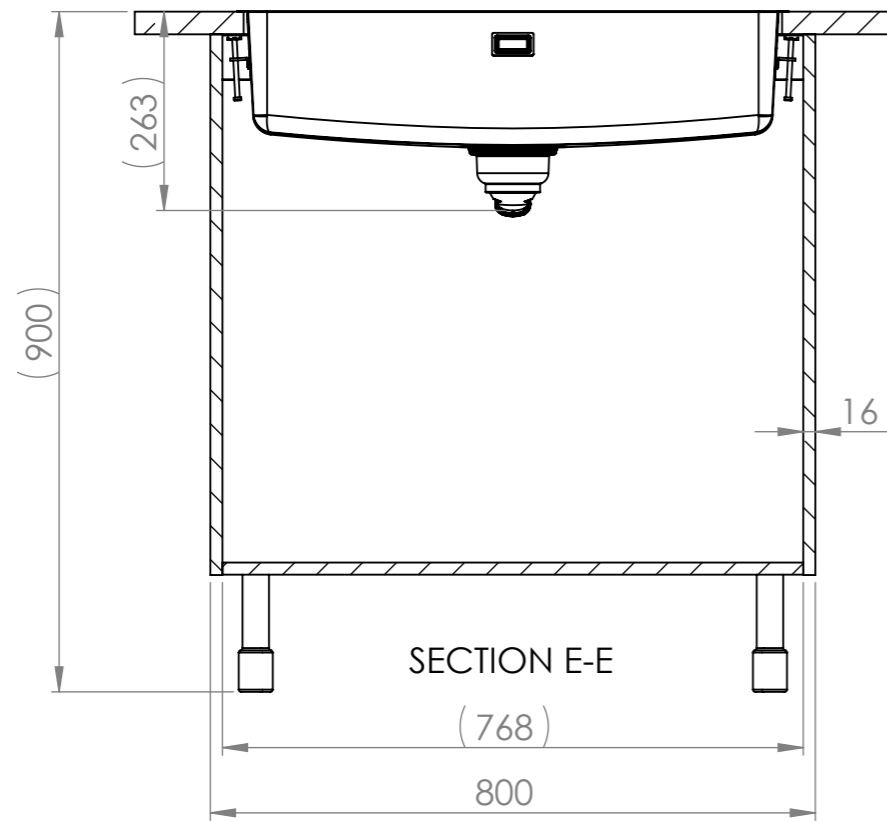
SECTION B-B



SECTION C-C

	Mass	kg	General tolerance	Designed by	Date
	Size	Scale	Item	VS	04.12.2025
STALA Member of ALVEUS	A3	1:5	Description	Approved by	Date
	ONE-70	Technical Data Sheet	SV	13.02.2026	
			Drawing number	Sheet/sheets	
			20050	2/3	
				Rev	A

SPACE REQUIREMENTS

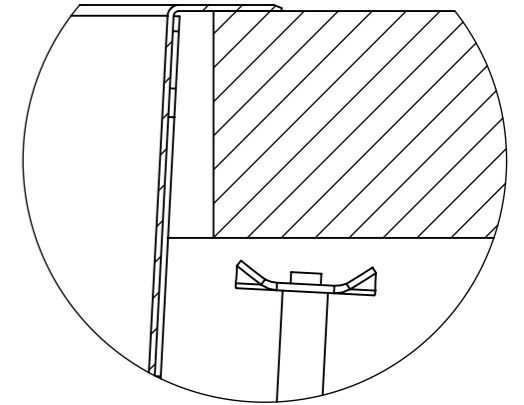
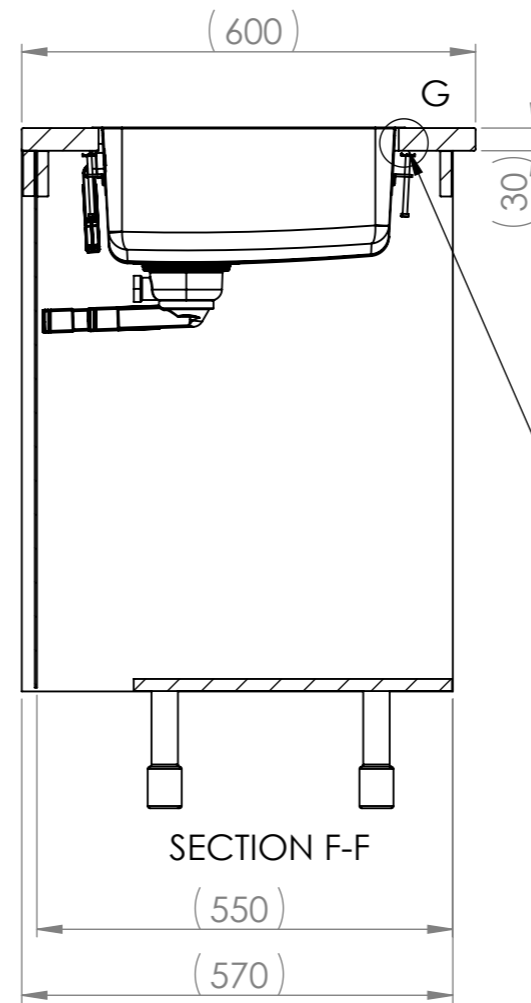


Change description

Date

Designed by

DETAIL G
SCALE 1 : 1



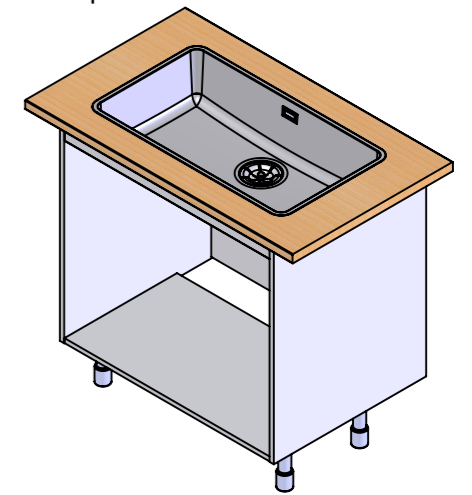
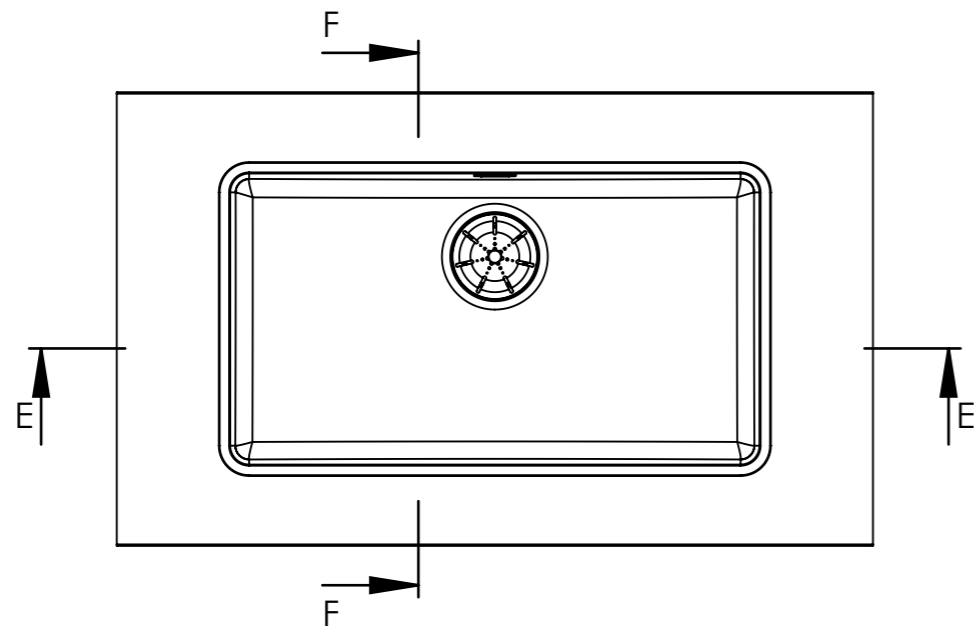
Huom! Tarvittaessa kaapin väliseinää ja etu/takalistaa lovetettava kiinnikkeitä varten ja pesuallas on kiinnitettävä ennen työtason asennusta.

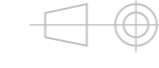
Obs!

Vid behov måste en inskärning för hofästena göras i skåpets mellanvägg och förbindningslist och diskbänken måste fästas innan du monterar bänkskivan.

Notice!

The partition walls and front/back list of the cupboard must be notched for the sink mountings when needed and the sink must be fastened before installing the worktop.



	Mass	kg	General tolerance	Designed by	Date
	Size	Scale	Item	VS	04.12.2025
STALA Member of ALVEUS	A3	1:10	Description	Approved by	Date
			ONE-70	SV	13.02.2026
			Technical Data Sheet	Drawing number	Sheet/sheets
			20050	3/3	Rev
				A	