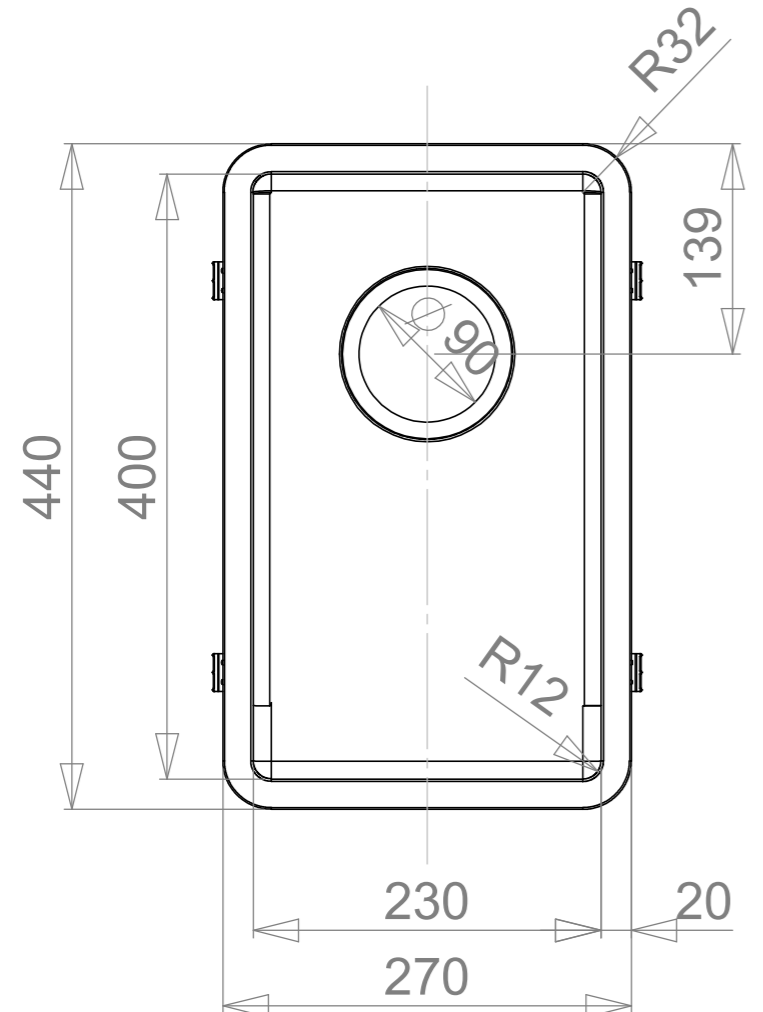
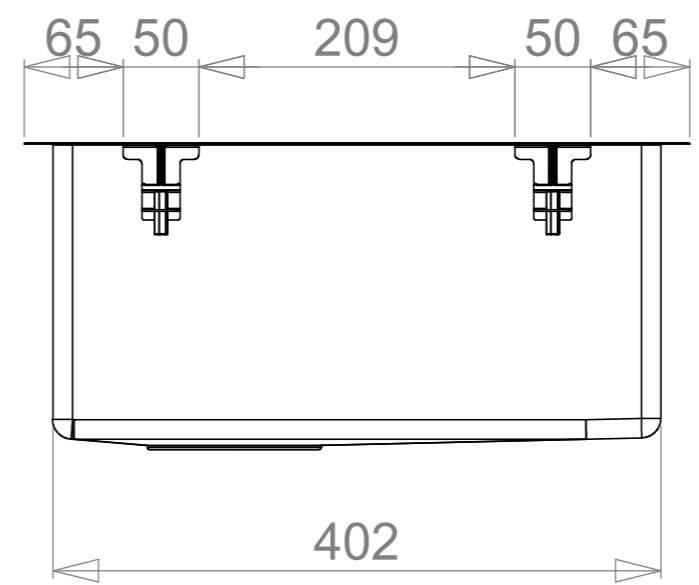
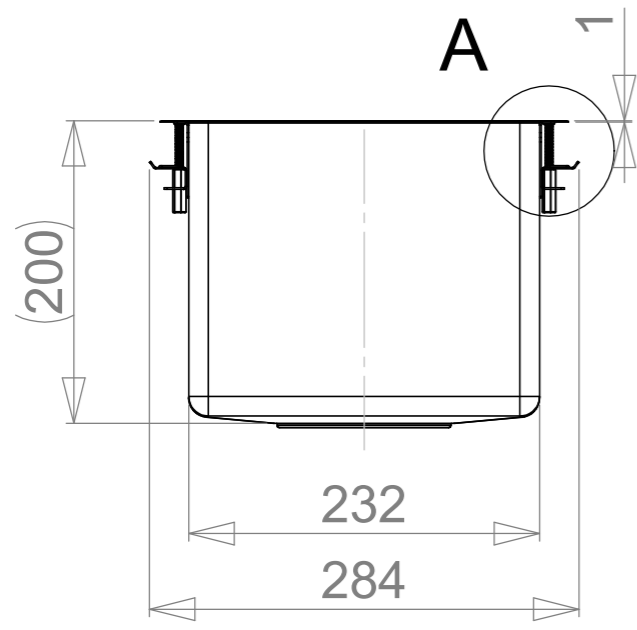
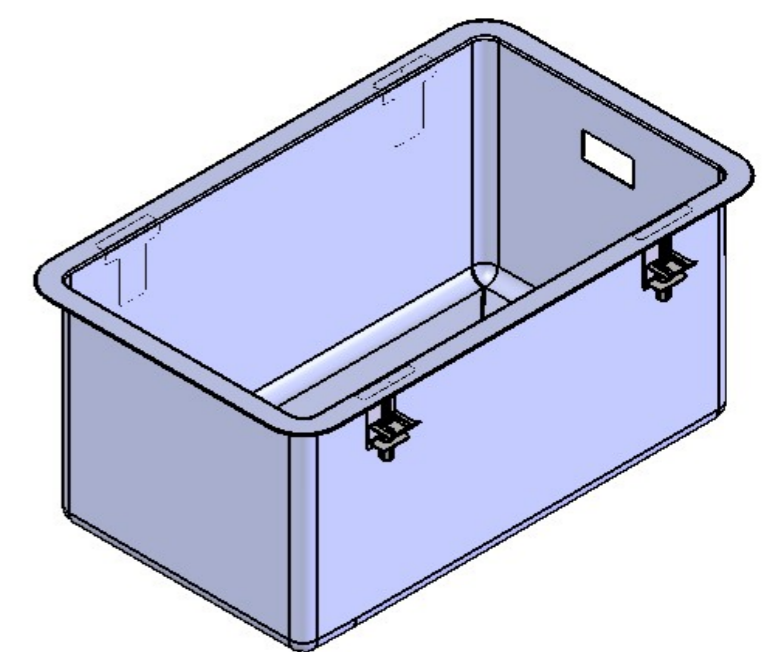
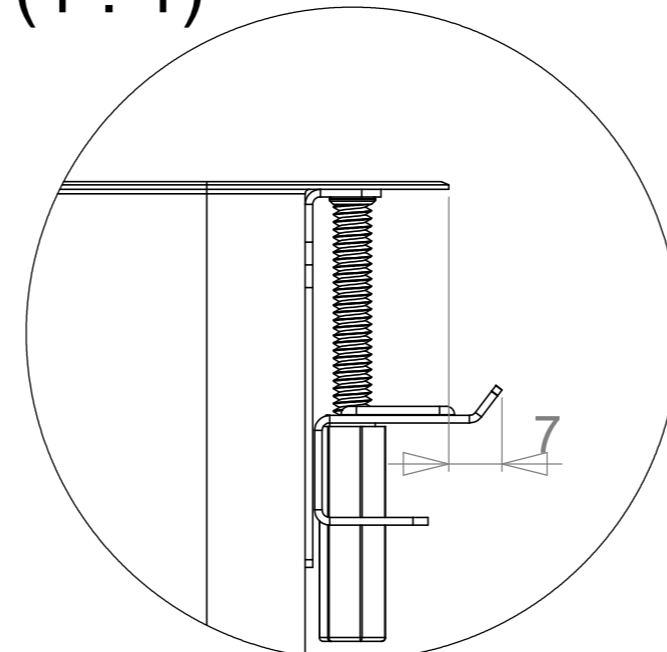




MAIN DIMENSIONS

REVISION	Muutos	Pvm	AUTHOR
A		28.4.2017	jaripe+
B		2.1.2019	villes+

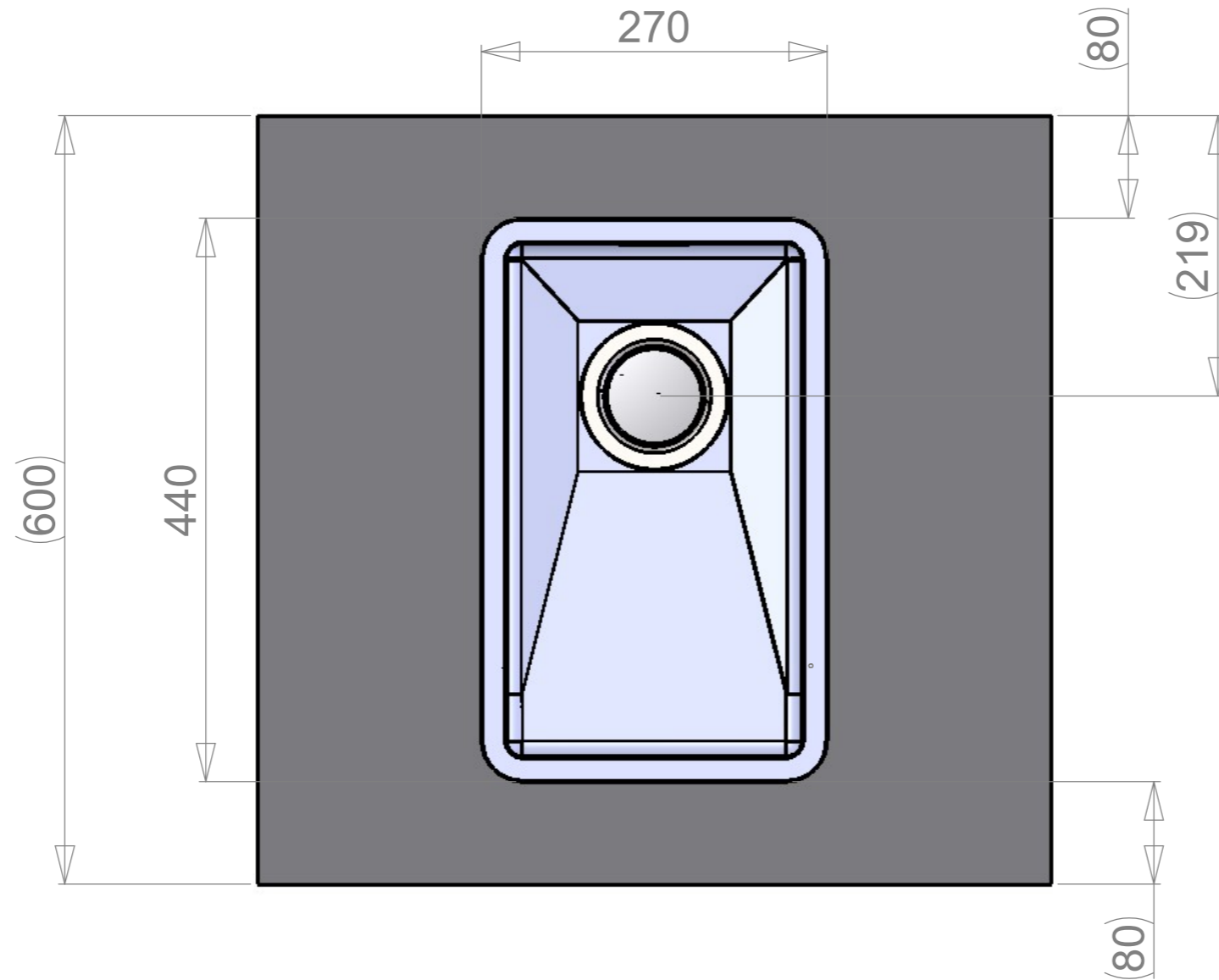


A (1 : 1)



	Massa	kg	Yleistoleranssi	Suunnittelija	Pvm
	Mittakaava	1:5	Nimike	JP	24.10.2016
 www.stala.com			Nimitys	Tarkastaja	Pvm
			MX-30	Piirustusnumero	Sivu
			Technical Data Sheet	14489	1/6
					Rev
					B

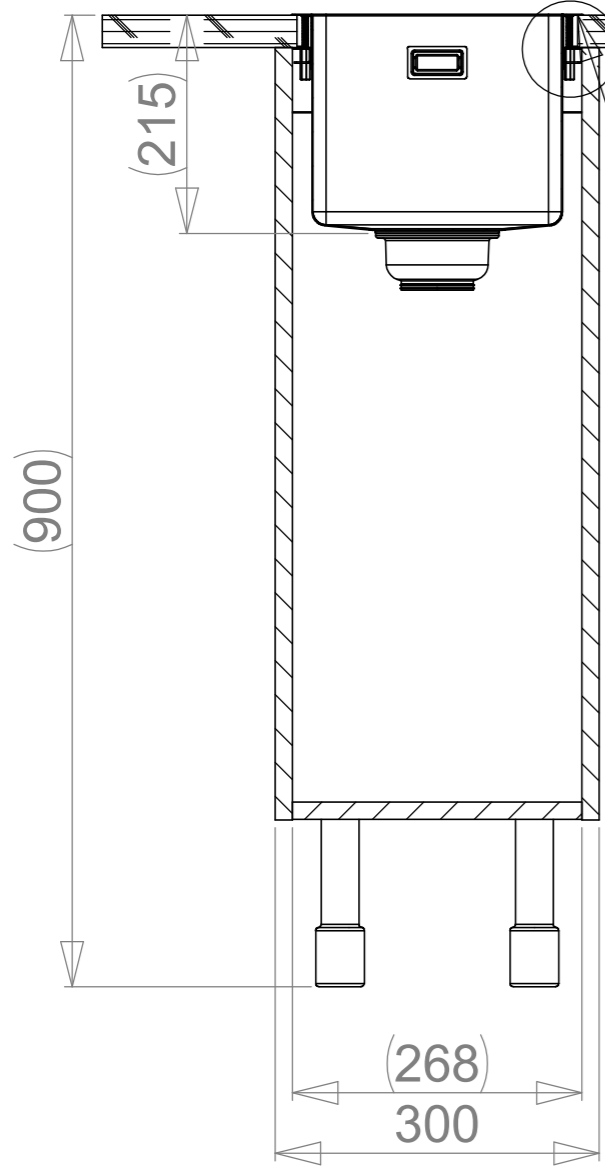
WORKTOP ASSEMBLY



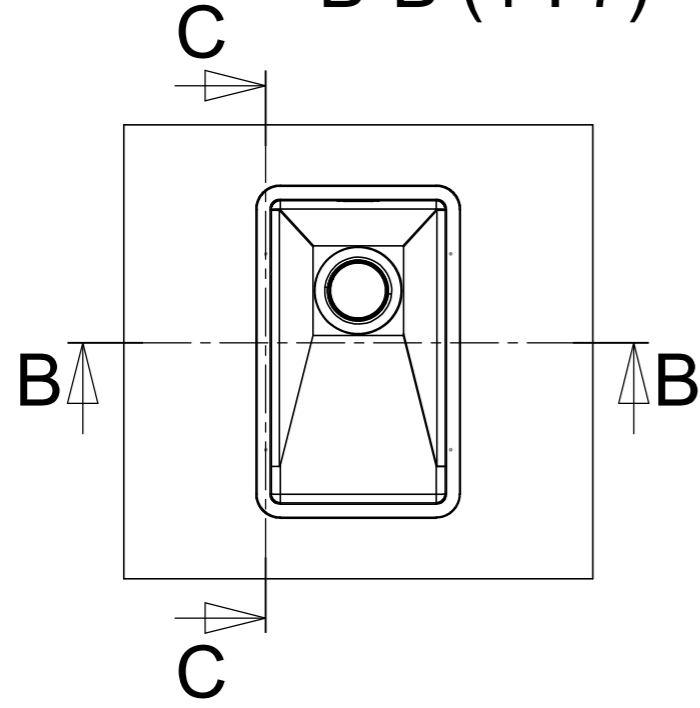
	Massa	Yleistoleranssi	Suunnittelija	Pvm
	kg		JP	24.10.2016
	Mittakaava	Nimike	Tarkastaja	Pvm
	A3	1:5		
 www.stala.com	Nimitys	Piirustusnumero	Sivu	
	MX-30	14489	2/6	
	Technical Data Sheet		Rev	B

SPACE REQUIREMENTS

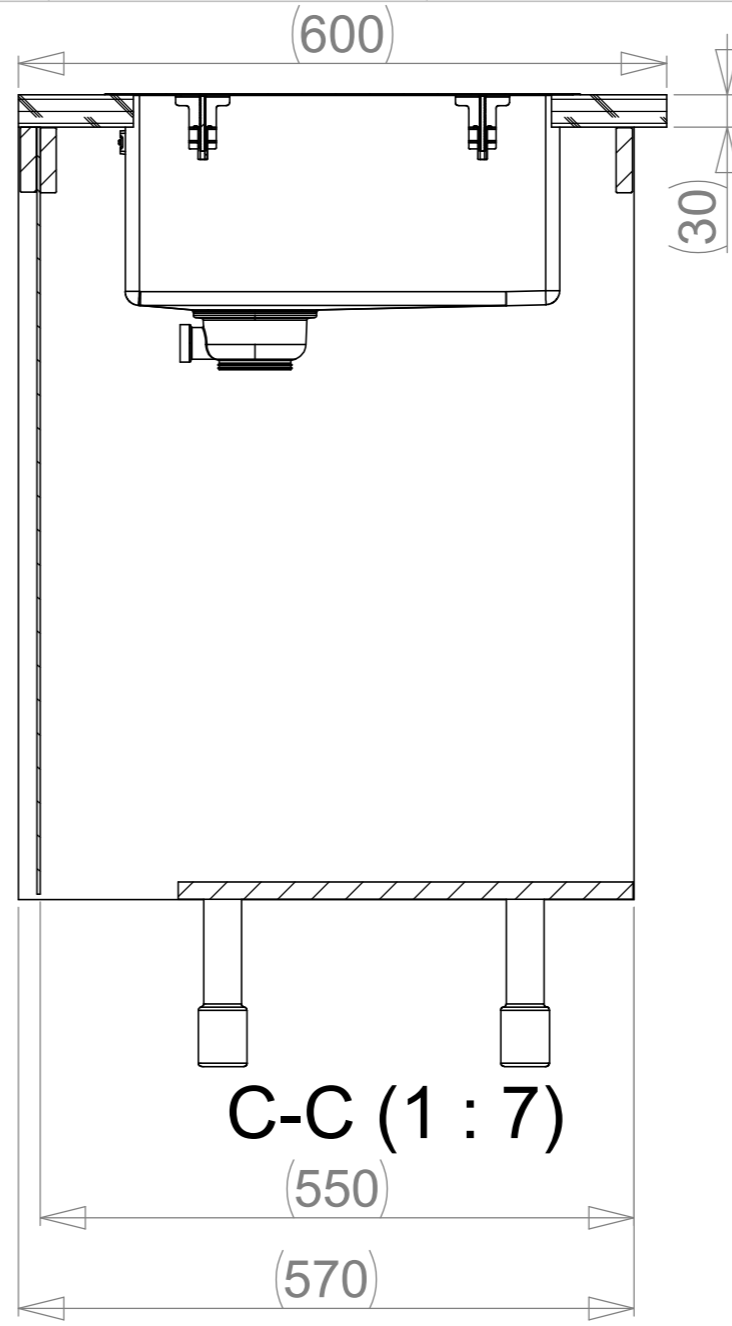
D



B-B (1 : 7)

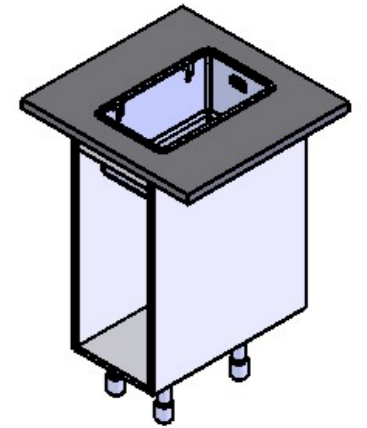
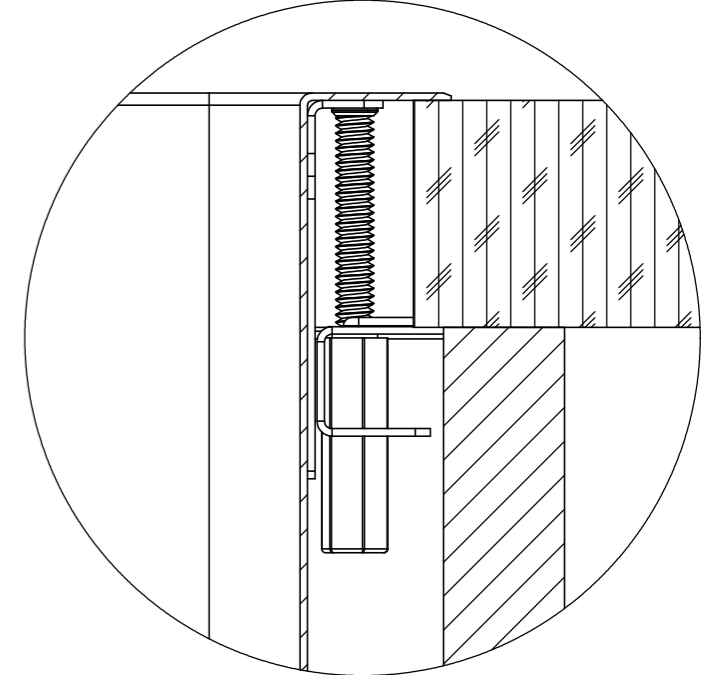



Huom!
 Tarvittaessa kaapin väliseinää ja etu/takalistaa lovetettava kiinnikkeitä varten ja pesuallas on kiinnitettävä ennen työtason asennusta.
 Obs!
 Vid behov måste en inskärning för hofästena göras i skåpets mellanvägg och förbindningslist och diskbänken måste fästas innan du monterar bänkskivan.
 Notice!
 The partition walls and front/back list of the cupboard must be notched for the sink mountings when needed and the sink must be fastened before installing the worktop.



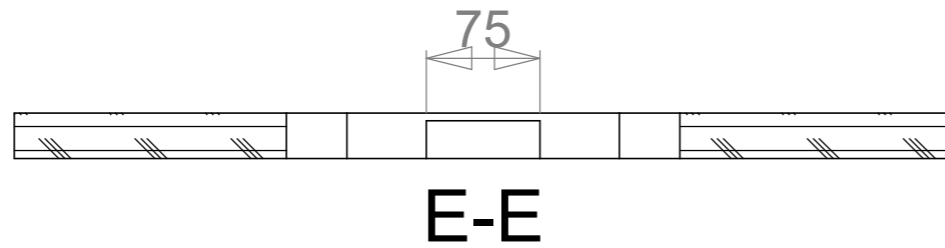
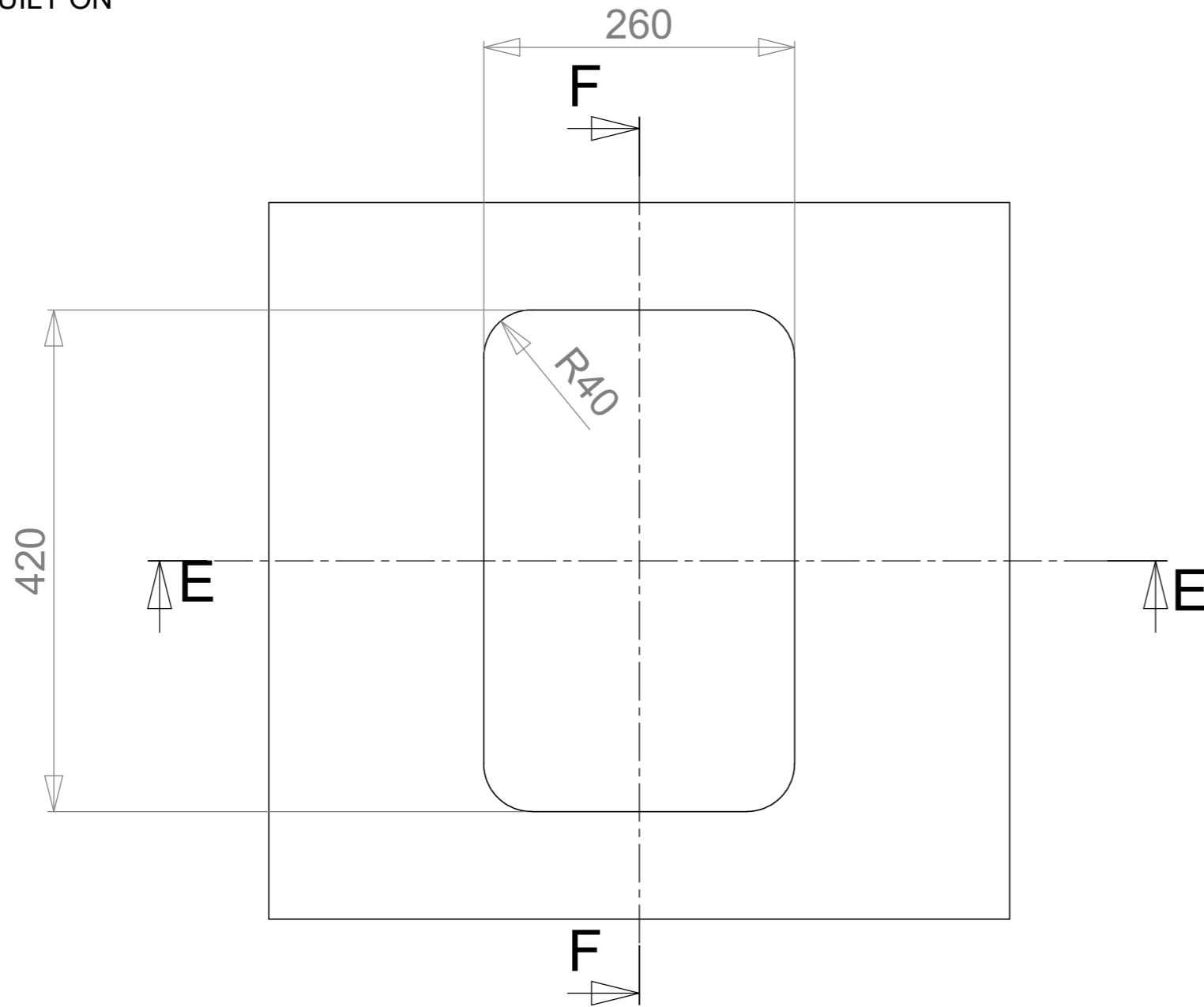
C-C (1 : 7)

D (1 : 1)



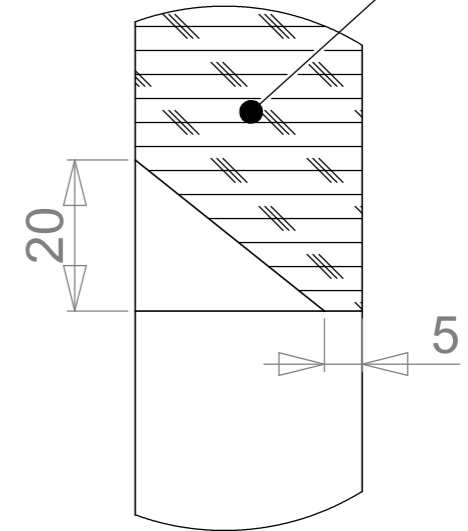
 www.stala.com	Massa kg	Yleistoleranssi	Suunnittelija JP	Pvm 24.10.2016
	Mittakaava A3 1:10	Nimike	Tarkastaja	Pvm
Nimitys MX-30		Piirustusnumero 14489	Sivu 3/6	Rev B
Technical Data Sheet				

CUT-OUT FOR BUILT ON

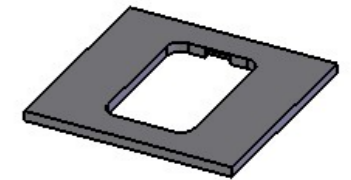




F-F

G Ylivuodon väistö.
Cut for overflow.



G (1 : 1)



	Massa	Yleistoleranssi	Suunnittelija	Pvm
	kg		JP	24.10.2016
	Mittakaava	Nimike	Tarkastaja	Pvm
	A3	1:5		
 www.stala.com	Nimitys	Piirustusnumero	Sivu	
	MX-30	14489	4/6	
	Technical Data Sheet		Rev	B

